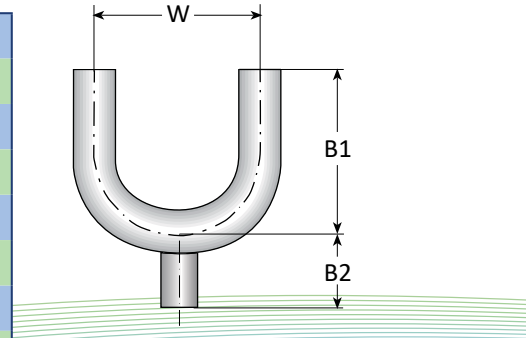


Use Points

180° Tee Bottom Outlet WWW

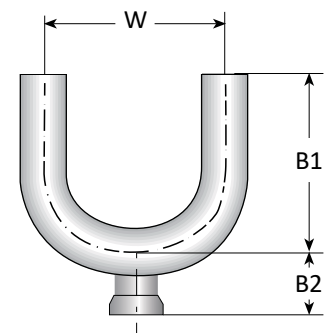
| Nominal Size | Dimensions | | | | | | Ordering Code |
|--------------|------------|-------|--------|--------|--------|--------|----------------|
| | W in. | W mm. | B1 in. | B1 mm. | B2 in. | B2 mm. | |
| 3/4" x 1/2" | 4.500" | 114.3 | 3.000" | 76.2 | 1.875" | 47.6 | 020015-U10-P6* |
| 3/4" x 3/4" | 4.500" | 114.3 | 3.000" | 76.2 | 1.875" | 47.6 | 020020-U10-P6* |
| 1.0" x 1/2" | 3.000" | 76.2 | 3.000" | 76.2 | 2.062" | 52.4 | 025015-U10-P6* |
| 1½" x 1/2" | 4.500" | 114.3 | 4.500" | 114.3 | 2.312" | 58.7 | 038015-U10-P6* |
| 2.0" x 1/2" | 6.000" | 152.4 | 5.000" | 127.0 | 2.562" | 65.1 | 051015-U10-P6* |
| 2½" x 1/2" | 7.500" | 190.5 | 5.750" | 146.1 | 2.812" | 71.4 | 063015-U10-P6* |
| 3.0" x 1/2" | 9.000" | 228.6 | 6.500" | 165.1 | 3.062" | 77.8 | 076015-U10-P6* |
| 4.0" x 1/2" | 12.000" | 304.8 | 8.500" | 215.9 | 3.562" | 90.5 | 100015-U10-P6* |



*The last digit refers to surface quality, according to Table 1

180° Tee Bottom Outlet WCW DT-23T

| Nominal Size | Dimensions | | | | | | Ordering Code |
|--------------|------------|-------|--------|--------|--------|--------|----------------|
| | W in. | W mm. | B1 in. | B1 mm. | B2 in. | B2 mm. | |
| 3/4" x 1/2" | 4.500" | 114.3 | 3.000" | 76.2 | 0.875" | 22.2 | 020015-U11-P6* |
| 3/4" x 3/4" | 4.500" | 114.3 | 3.000" | 76.2 | 0.875" | 22.2 | 020020-U11-P6* |
| 1.0" x 1/2" | 3.000" | 76.2 | 3.000" | 76.2 | 1.062" | 27.0 | 025015-U11-P6* |
| 1½" x 1/2" | 4.500" | 114.3 | 4.500" | 114.3 | 1.312" | 33.3 | 038015-U11-P6* |
| 2.0" x 1/2" | 6.000" | 152.4 | 5.000" | 127.0 | 1.562" | 39.7 | 051015-U11-P6* |
| 2½" x 1/2" | 7.500" | 190.5 | 5.750" | 146.1 | 1.812" | 46.0 | 063015-U11-P6* |
| 3.0" x 1/2" | 9.000" | 228.6 | 6.500" | 165.1 | 2.062" | 52.4 | 076015-U11-P6* |
| 4.0" x 1/2" | 12.000" | 304.8 | 8.500" | 215.9 | 2.562" | 65.1 | 100015-U11-P6* |

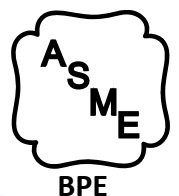


*The last digit refers to surface quality, according to Table 1

Ordering Example

| Description | Nominal Size In. | Ordering Code |
|-------------|------------------|-----------------|
| Type U11 | 1.0" X 1/2" | 025015-U11-P64* |

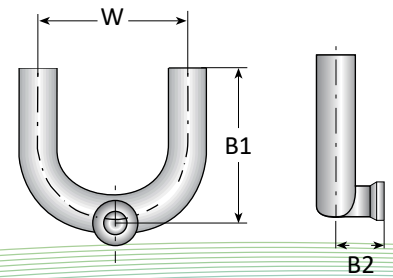
*Material and Surface are including to the ordering code



Use Points

Use Point

| Nominal Size | Dimensions | | | | | | Ordering Code |
|---------------|------------|-------|--------|--------|--------|--------|----------------|
| | W in. | W mm. | B1 in. | B1 mm. | B2 in. | B2 mm. | |
| 3/4" x 1/2" | 4.500" | 114.3 | 3.000" | 76.2 | 0.875" | 22.2 | 020015-U21-P6* |
| 3/4" x 3/4" | 4.500" | 114.3 | 3.000" | 76.2 | 0.875" | 22.2 | 020020-U21-P6* |
| 1.0" x 1/2" | 3.000" | 76.2 | 3.000" | 76.2 | 1.062" | 27.0 | 025015-U21-P6* |
| 1 1/2" x 1/2" | 4.500" | 114.3 | 4.500" | 114.3 | 1.312" | 33.3 | 038015-U21-P6* |
| 2.0" x 1/2" | 6.000" | 152.4 | 5.000" | 127.0 | 1.562" | 39.7 | 051015-U21-P6* |
| 2 1/2" x 1/2" | 7.500" | 190.5 | 5.750" | 146.1 | 1.812" | 46.0 | 063015-U21-P6* |
| 3.0" x 1/2" | 9.000" | 228.6 | 6.500" | 165.1 | 2.062" | 52.4 | 076015-U21-P6* |
| 4.0" x 1/2" | 12.000" | 304.8 | 8.500" | 215.9 | 2.562" | 65.0 | 100015-U21-P6* |



*The last digit refers to surface quality, according to Table 1

| TECHNICAL DATA | |
|----------------------------------|------------|
| Material | 316L |
| Norm | ASME - BPE |
| Surface finish standard on stock | SF1 |

Table 1

| Inside Surface | Outside Surface | |
|---------------------------|------------------------------------|---|
| No finish requirement | No finish requirement | 0 |
| SF1 (MP* 20μ-in 0.51 μm) | Mechanically polished to 32RA μ-in | 4 |
| SF4 (MP** 15μ-in 0.38 μm) | Mechanically polished to 32RA μ-in | M |

*MP: Mechanically Polished

**MPE: Mechanically Polished & Electropolished

Ordering Example

| Description | Nominal Size In. | Ordering Code |
|-------------|------------------|-----------------|
| Type U21 | 1.0" x 1/2" | 025015-U21-P64* |

*Material and Surface are including to the ordering code